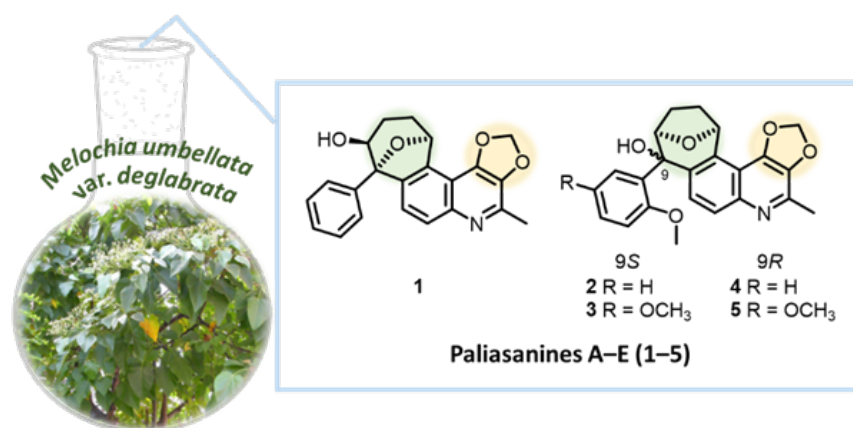
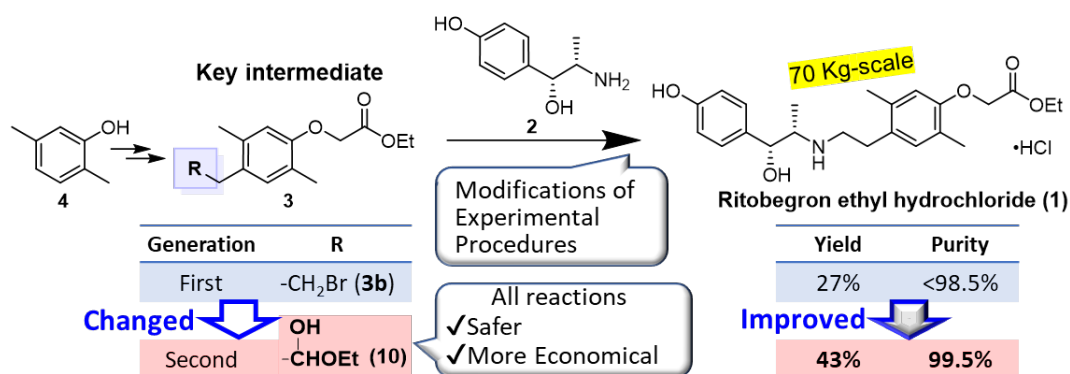


1. Rahim A, Saito Y, Fukuyoshi S, Miyake K, Goto M, Chen CH, Alam G, Lee KH, Nakagawa-Goto K.* Palasanines A-E, 3,4-Methylenedioxyquinoline Alkaloids Fused with a Phenyl-14-oxabicyclo[3.2.1]octane Unit from *Melochia umbellata* var. *deglabrata*. *J Nat Prod*, **2020**, *83*, 2931–2939. <https://doi.org/10.1021/acs.jnatprod.0c00454>



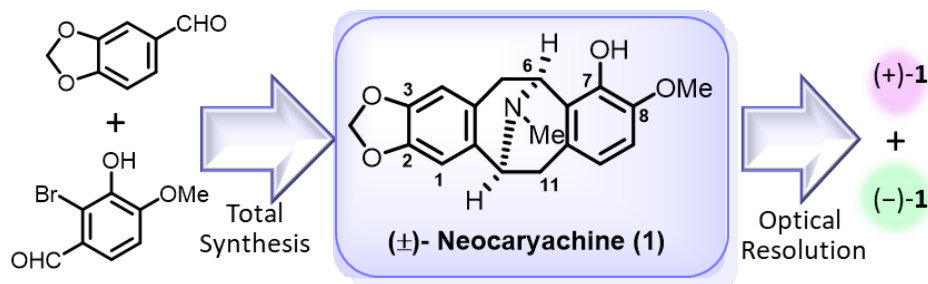
2. Sonehara J, Tamai T, Isawa H, Hotei Y, Kasai K, Kikuchi N, Ishikawa T, Kobayashi M, Ozawa T, Suzuki R, Kobayashi M, Ainai T, Nishimura M, Saito Y, Nakagawa-Goto K.* Development of an efficient scale-up synthesis for β_3 -adrenergic receptor agonist, ritobegron ethyl hydrochloride, *Org. Proc. Res. Dev.*, **2020**, *24*, 1675–1682.

<https://doi.org/10.1021/acs.oprd.0c00278>

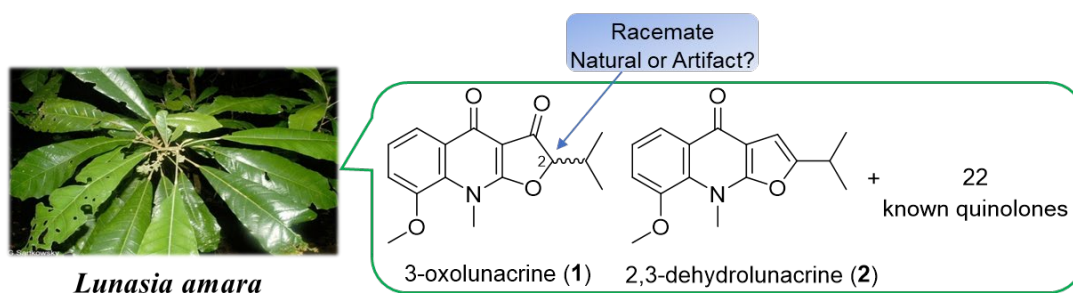


3. Rahim A, Mostofa MG, Sadik MG, Rahman MAA, Khalil MI, Tsukahara T, Nakagawa-Goto K, Alam AHMK, The anticancer activity of two glycosides from the leaves of *Leea aequata* L. *Nat. Prod. Res.* **2020**, *35*, 5867–5871. <https://doi.org/10.1080/14786419.2020.1798661>

4. Miura Y, Saito Y, Goto M, Nakagawa-Goto K. * First Total Synthesis of a Pavine Alkaloid, (±)-Neocaryachine, and its Optical Resolution, *Chem. Pharm. Bull.*, **2020**, 68, 899–902. <https://doi.org/10.1248/cpb.c20-00370>,



5. Yamashita M, Saito Y, Rahim A, Fukuyoshi S, Miyake K, Goto M, Nakagawa-Goto K. * Novel Furoquinolinones from an Indonesian Plant, *Lunasia amara*, *Tetrahedron Lett.* **2020**, 61, 151861. <https://doi.org/10.1016/j.tetlet.2020.151861>



6. Kadomoto S, Izumi K, Hiratsuka K, Nakano T, Naito R, Makino T, Iwamoto H, Yaegashi H, Shigehara K, Kadono Y, Nakata H, Saito Y, Nakagawa-Goto K, Mizokami A, Tumor-associated macrophages induce migration of renal cell carcinoma cells via activation of the CCL20-CCR6 axis, *Cancers*. **2020**, 12, 89–102. <https://doi.org/10.3390/cancers12010089>

